



Circular No: IEX/MO/1530/2024

Date: 25th May 2024

Implementation of the end-to-end Encryption in the Trading Platform

Dear Members,

IEX is implementing the end-to-end encryption in its Trading Platform with effect from the Trade Date of 28th May 2024 to comply with Hon'ble Commission Order No. 2/SM/2024 dated 21st February 2024. Accordingly, Members may please note the following:

1. Due to the planned deployment of the changes mentioned above, there will be a downtime for MAT/TWS connectivity for both Desktop as well as Web-Portal (Energx) from 00:35 hrs. to 00:50 hrs. on 28th May 2024.
2. The start of bidding for the RTM 5th session for Delivery Date 28th May 2024 (Delivery Period from 02:00 hrs. to 02:30 hrs.) may get delayed by 5 minutes and start at 00:50 hrs. instead of 00:45 hrs. All members are requested to plan their bidding accordingly.
3. Intraday market will not be available between 00:15 hrs. to 02:30 hrs. on Trade Date 28th May 2024.
4. In Intra-Day segment, the carry forward of the DAC Orders for Delivery Date 28th May 2024 that are un-cleared at 23:30 hrs. on Trade Date 27th May 2024 will not take place to the Intra-Day segment for the Delivery Date 28th May 2024.
5. Historical Data will not be available on WebPortal (Energx) from 00:35 hrs. till 1:30 hrs. on 28th May 2024.
6. TRAS bidding related menus will not be available on WebPortal (Energx) till further notice but the same will be available in Desktop MAT/TWS application.
7. All the Bidding and the Post Bidding activities will continue to work fine with the existing Desktop MAT/TWS application after the deployment of the end-to-end Encryption changes.

Indian Energy Exchange Ltd

Registered Office: C/o Avanta Business Centre, First Floor, Unit No. 1.14(a), D2, Southern Park, District Centre, Saket, New Delhi-110017, India

Corporate Office: 9th Floor, Max Towers, Sector 16B, Noida, Uttar Pradesh-201301, India

Tel: +91-011-3044 6511 | Tel: +91-120-4648 100 | Fax No.: +91-120-4648 115

CIN: L74999DL2007PLC277039 | Website: www.iexindia.com

8. Post the deployment of the end-to-end Encryption changes, the below mentioned reports will work fine only with the New Desktop MAT application.
- a. Daily Limit Watch
 - b. TAM / EC Daily Limit Watch
 - c. Quantity Limit Watch
 - d. User List

The MAT reports mentioned above will be available in the Web-Portal (Energx) MAT post deployment of the changes.

Note: Members may download the New Desktop MAT Application to view the above-mentioned reports in Desktop MAT. Kindly refer to the attached annexure to download and install new Desktop MAT application.

For any clarification you may contact: 0120-4648253/254/240/236.

For and on behalf of
Indian Energy Exchange Limited

(Sd\ -)
Amit Kumar
Senior Vice President
(Market Operations)

Indian Energy Exchange Ltd

Registered Office: C/o Avanta Business Centre, First Floor, Unit No. 1.14(a), D2, Southern Park, District Centre, Saket, New Delhi-110017, India

Corporate Office: 9th Floor, Max Towers, Sector 16B, Noida, Uttar Pradesh-201301, India

Tel: +91-011-3044 6511 | Tel: +91-120-4648 100 | Fax No.: +91-120-4648 115

CIN: L74999DL2007PLC277039 | Website: www.ixindia.com

Annexure

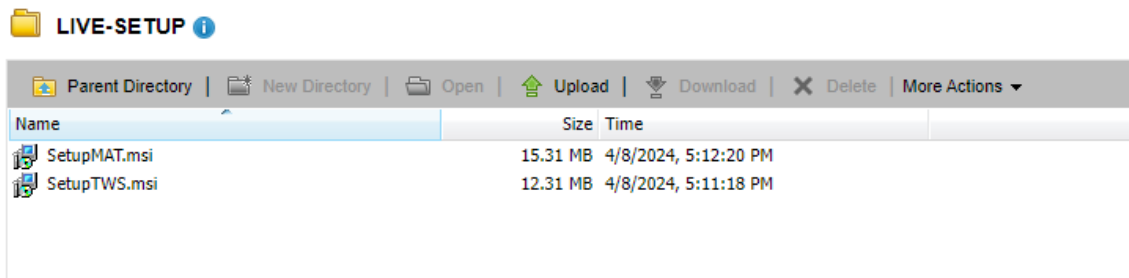
Live Trading for IEX Trade (MAT/TWS) Installation Step By Step

Step1: Download Live setup of TWS/ MAT from SFTP Server

- Access IEX SFTP Server by accessing URL '<https://sftp.ixindia.com>' by your given user ID and password.



- Access the path "MEMBER COMMON/LIVE-SETUP" as per below screen shot.



- Go to respective Folders and download the MAT and TWS setup exe by right click on same.

Step2: Installation of MAT Application for trading

- Double click on setup and Click on Next

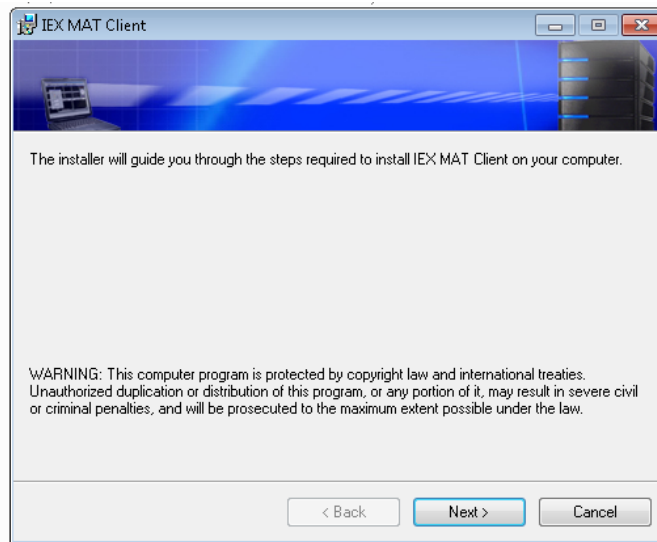
Indian Energy Exchange Ltd

Registered Office: C/o Avanta Business Centre, First Floor, Unit No. 1.14(a), D2, Southern Park, District Centre, Saket, New Delhi-110017, India

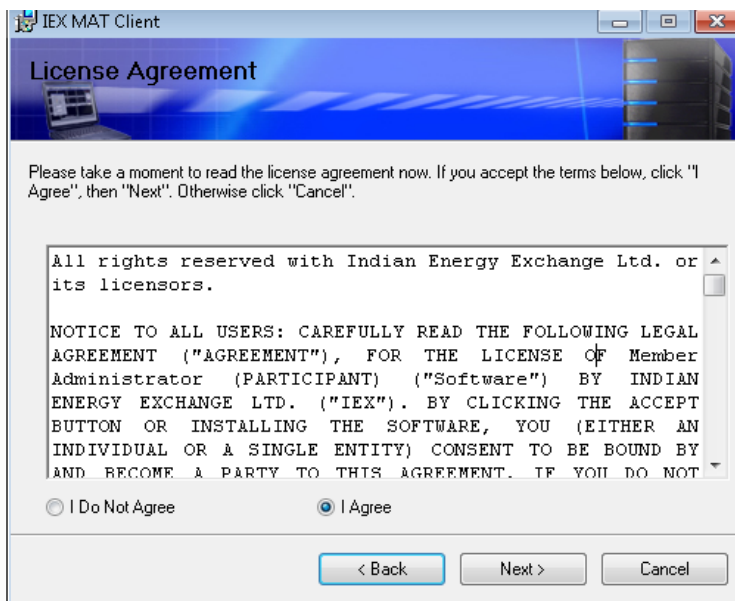
Corporate Office: 9th Floor, Max Towers, Sector 16B, Noida, Uttar Pradesh-201301, India

Tel: +91-011-3044 6511 | Tel: +91-120-4648 100 | Fax No.: +91-120-4648 115

CIN: L74999DL2007PLC277039 | Website: www.ixindia.com



- Select "I Agree" and click on Next



Indian Energy Exchange Ltd

Registered Office: C/o Avanta Business Centre, First Floor, Unit No. 1.14(a), D2, Southern Park, District Centre, Saket, New Delhi-110017, India

Corporate Office: 9th Floor, Max Towers, Sector 16B, Noida, Uttar Pradesh-201301, India

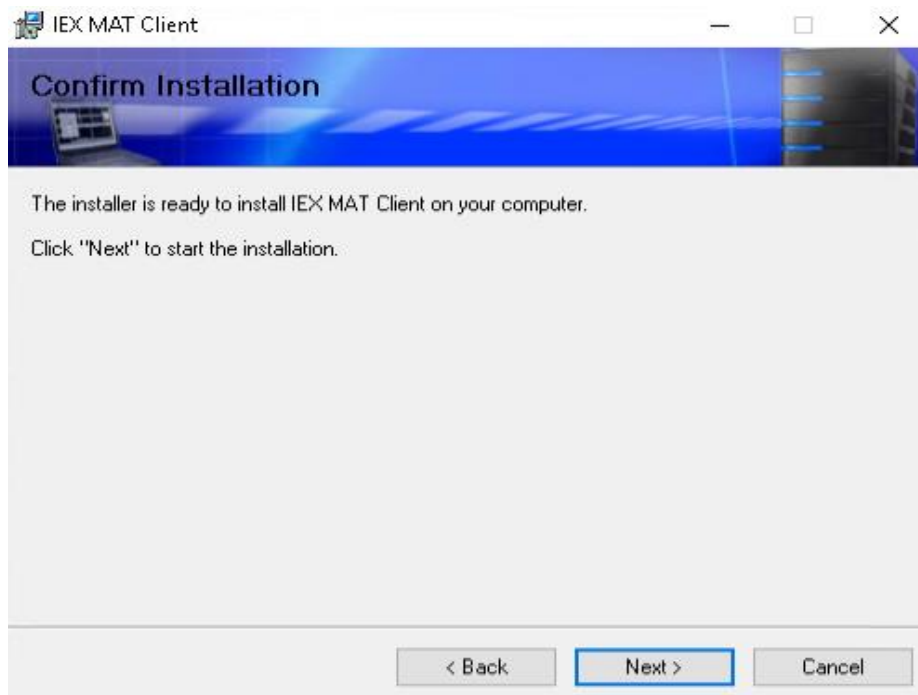
Tel: +91-011-3044 6511 | Tel: +91-120-4648 100 | Fax No.: +91-120-4648 115

CIN: L74999DL2007PLC277039 | Website: www.iexindia.com

- “Select Installation Folder” and click on Next



- Click on Next



- After the installation process click on Close, MAT application has been installed.

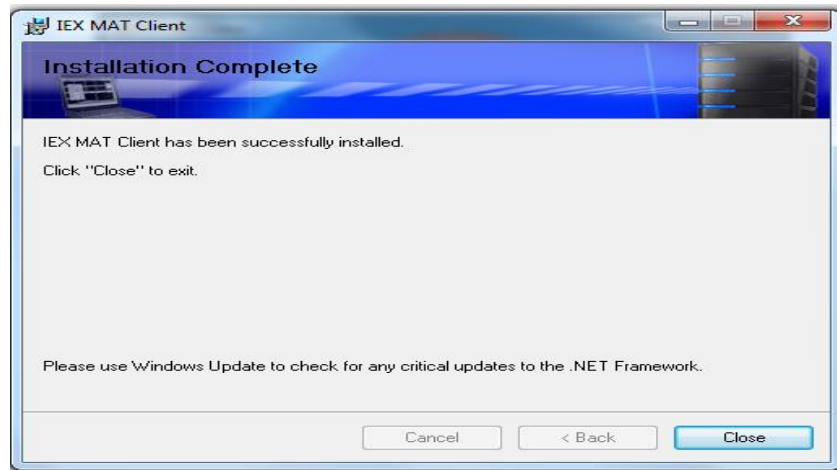
Indian Energy Exchange Ltd

Registered Office: C/o Avanta Business Centre, First Floor, Unit No. 1.14(a), D2, Southern Park, District Centre, Saket, New Delhi-110017, India

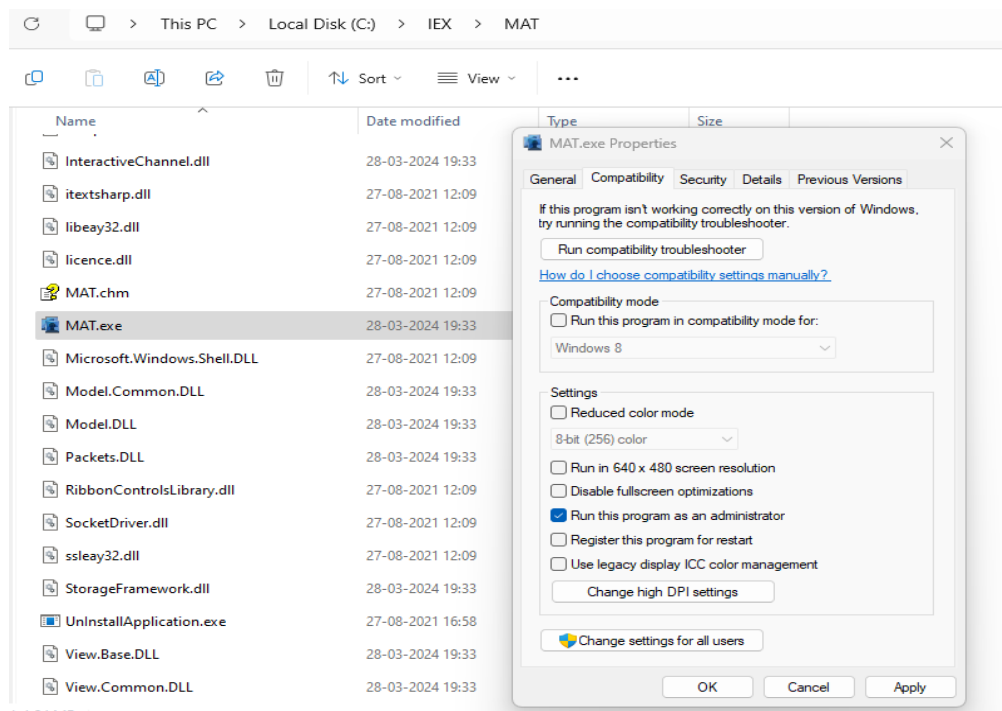
Corporate Office: 9th Floor, Max Towers, Sector 16B, Noida, Uttar Pradesh-201301, India

Tel: +91-011-3044 6511 | Tel: +91-120-4648 100 | Fax No.: +91-120-4648 115

CIN: L74999DL2007PLC277039 | Website: www.iexindia.com



- Now go to C Drive under IEX/MAT folder right click on MAT installed exe and go to properties, select the Compatibility section and check mark the box **“Run this program as an administrator”** and click apply, ok as per the screen shot.



- Please verify MAT version **‘16.0.0.0’** refer below screen shot.

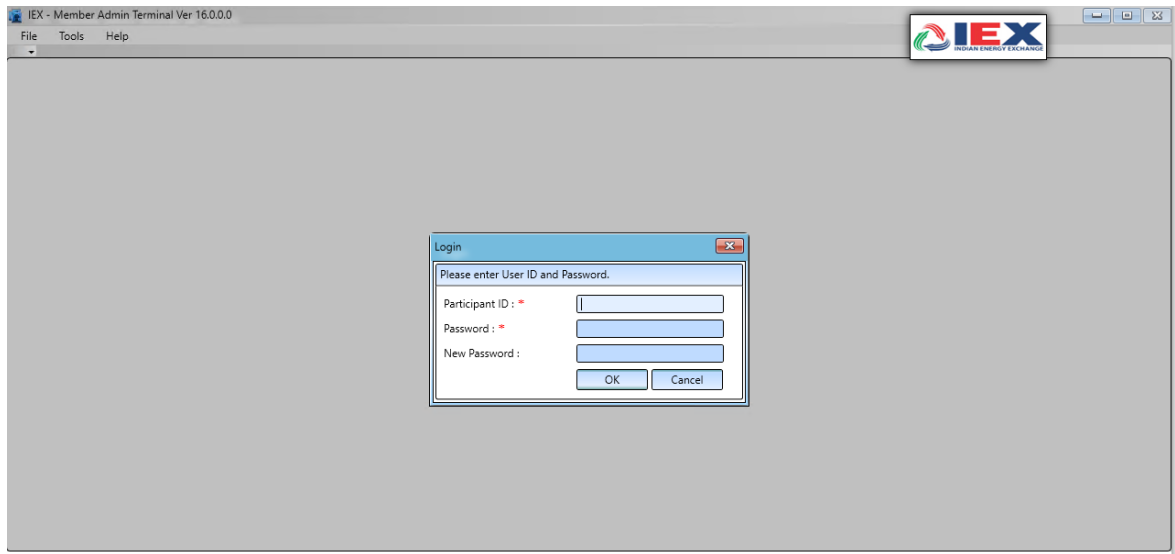
Indian Energy Exchange Ltd

Registered Office: C/o Avanta Business Centre, First Floor, Unit No. 1.14(a), D2, Southern Park, District Centre, Saket, New Delhi–110017, India

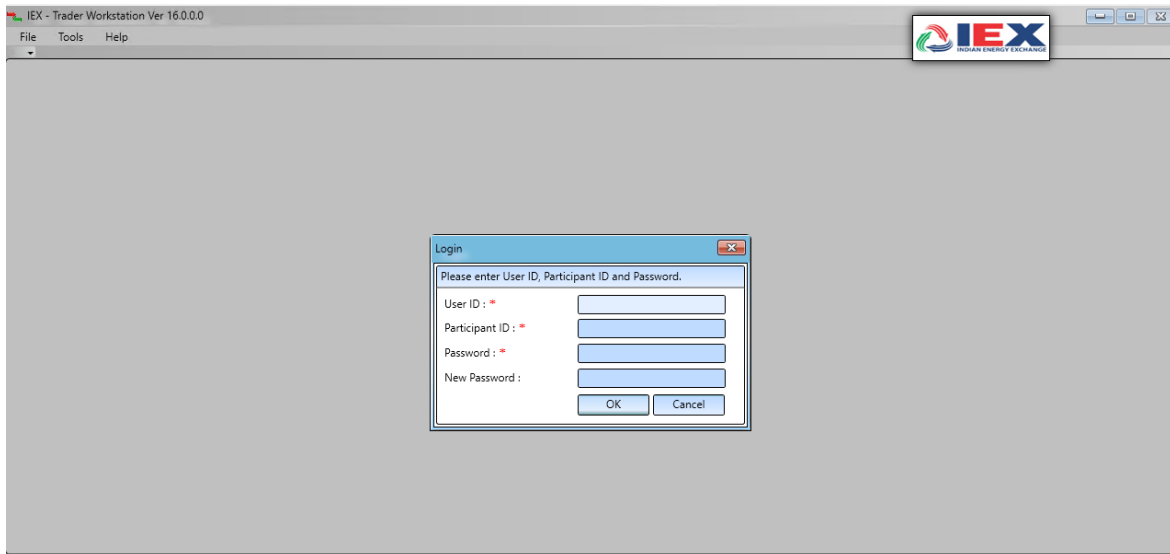
Corporate Office: 9th Floor, Max Towers, Sector 16B, Noida, Uttar Pradesh–201301, India

Tel: +91-011-3044 6511 | Tel: +91-120-4648 100 | Fax No.: +91-120-4648 115

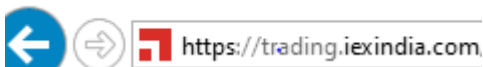
CIN: L74999DL2007PLC277039 | Website: www.iexindia.com



Step 3: Please follow same installation steps for 'setup TWS' installation.
After installation verify Trader Workstation Version as '16.0.0.0', refer below screenshot.
Double Click on TWS Icon on your Desktop screen



Step 4: Member SSL Login step for Live trading participations



Step5: Please connect Live TWS and MAT with the URL as '<https://trading.iexindia.com>'

Step6: It will show below window, please enter 'SSL' user id and password.

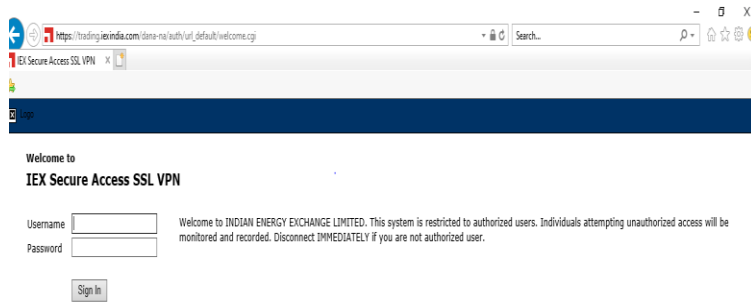
Indian Energy Exchange Ltd

Registered Office: C/o Avanta Business Centre, First Floor, Unit No. 1.14(a), D2, Southern Park, District Centre, Saket, New Delhi-110017, India

Corporate Office: 9th Floor, Max Towers, Sector 16B, Noida, Uttar Pradesh-201301, India

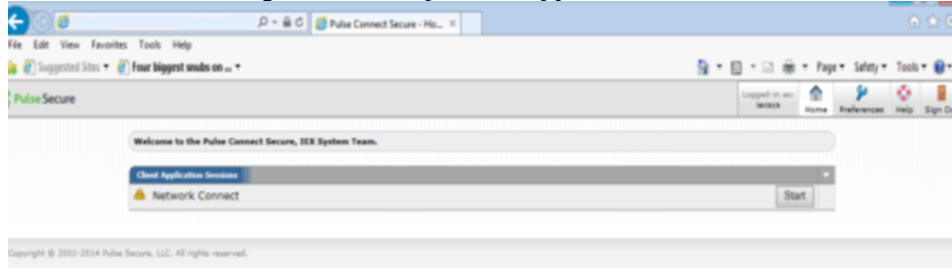
Tel: +91-011-3044 6511 | Tel: +91-120-4648 100 | Fax No.: +91-120-4648 115

CIN: L74999DL2007PLC277039 | Website: www.iexindia.com



Step7: After successful login, it will show below window, please verify ‘connected’ yellow icon in ‘show hidden icon’ tab.

Note: Also, Members can use Exiting SSL Desktop client Application to connect the SSL VPM



Finish

Indian Energy Exchange Ltd

Registered Office: C/o Avanta Business Centre, First Floor, Unit No. 1.14(a), D2, Southern Park, District Centre, Saket, New Delhi–110017, India

Corporate Office: 9th Floor, Max Towers, Sector 16B, Noida, Uttar Pradesh–201301, India

Tel: +91-011-3044 6511 | Tel: +91-120-4648 100 | Fax No.: +91-120-4648 115

CIN: L74999DL2007PLC277039 | Website: www.iexindia.com